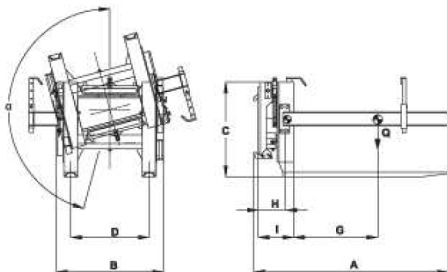


TIPPER CM 165 ECO

Can be applied to forklift trucks. Ideal for turning upside down and moving bins. Equipped as standard with a third side fork, quick hooking/un-hooking and connection tubes. Available in the FR version with pliable forks.



CM 165 ECO/CM 165 ECO FR				
			CM 165 ECO	CM 165 ECO FR
A	Lunghezza - Length	mm	1350	1350
B	Larghezza - Width	mm	850	850
C	Altezza - Height	mm	840	840
D	Interasse forche - Fork base	mm	580	580
H	Baricentro senza carico - Barycentre without load	mm	250	250
G	Baricentro del carico - Barycentre of the load	mm	500	500
I	Spessore - Thickness	mm	250	250
Q	Angolo di rovesciamento - Tilting angle	°	165°	165°
Q	Portata massima (in trasferimento) - Maximum load (during transfer)	Kg	1500	1500
-	Portata massima (in rovesciamento) - Maximum load (during tilting)	Kg	700	700
-	Pressione di esercizio - Operating pressure	bar	140	140
-	Peso - Weight	Kg	245	245
-	Linee idrauliche necessarie - Required hydraulic lines	n.	2 (1 leva d.e.) - (1 d.c. lever)	2 (1 leva d.e.) - (1 d.c. lever)
-	Forche pieghevoli - Pliable forks	-	-	100x35 L=1060
-	Forche fisse - Fixed forks	-	100x35 L=1060	-



Download the form in [PDF format](#).